



## ROOMS & SUITES

The hotel has 282 guest rooms including standard rooms, family rooms, junior suites, Level 5 executive suites, 2 penthouses suites and 21 serviced apartments. All rooms are non smoking and combine contemporary style and comfort. Guests can avail of complimentary WiFi, as well as dial-up connections with an ISDN or

analog modem. Our spacious and luxurious Level 5 suites offer individual terraces with panoramic views and complimentary use of the business centre. The penthouse suite offers every luxury with private kitchen, dining room, lounge, office, bedroom and spacious bathroom.

Our one and two bedroom duplex apartments enjoy a private entrance located within the hotel complex and are ideal for long stay business executives looking for a home away from home. Complimentary WiFi, satellite TV & DVD player are among the amenities.

## DINING

**Restaurant Marina's** offers seating for 220 guests and also has a private dining room, catering for up to 80 guests for breakfast meetings and corporate dinners. Restaurant Marina's serves Super Buffet Breakfast from 7am. Guests

with an early start can avail of our Grab & Run service from 5am with coffees and pastries available to take away. **Le Marché** Buffet is available daily. The Atrium Bar & Lounge offers afternoon and evening dining overlooking Lough Atalia.

**The Veranda Lounge** is a unique venue for every occasion, for private or corporate events. Opening onto the terrace makes it a perfect venue for summer or winter barbeques.

## SPA & LEISURE

Featuring an impressive east wing relaxation area, thermal suite and 15 luxurious treatment rooms, relax in **spirit one spa** as you enjoy excellent Elemis & Ole Henriksen spa treatments. The thermal suite offers a unique collection of cold, warm & hot

thermal experiences to detoxify, relax, enhance, moisturise and invigorate your entire body. Visit [spiritonespa.com](http://spiritonespa.com) to shop online. Browse through the selection of spa retail products from the comfort of your own home. Gift cards from spirit one spa make the ideal gift

for any occasion. All hotel guests can enjoy complimentary use of **spirit one fitness & leisure** with swimming pool, children's pool, Jacuzzi, sauna, steam room, gymnasium and an outdoor hot tub, offering wonderful views of Lough Atalia.



### BY CAR

The hotel is situated in Galway 218km from Dublin, 90km from Shannon International Airport and Ireland West Airport Knock. From Dublin follow signs for The West N4, join the M6 motorway to Galway. Follow signs for Galway City East & Docks. After Galway Clinic, at Martin Roundabout, take 3<sup>rd</sup> exit and continue straight. Galway Crystal is on your left hand side. Continue straight through the traffic lights. Take the 2nd exit at the Skeritt Roundabout at GMIT. Travel straight until the Huntsman Inn Junction. Turn left and travel straight ahead keeping left at the fork in the road that has two sets of traffic lights. The hotel is on your right.

### BY RAIL & BUS

Galway Ceannt Bus & Train Station is located 300 metres from the hotel, and local trains run from Dublin & Limerick daily.

### BY AIR

For full flight details to and from the city visit [www.galwayairport.com](http://www.galwayairport.com), [www.dublinairport.com](http://www.dublinairport.com), [www.shannonairport.com](http://www.shannonairport.com) or [www.irelandwestairport.com](http://www.irelandwestairport.com)

## MEETING PLANNER

Radisson Blu Hotel & Spa, Galway

# WELCOME TO RADISSON BLU



Radisson Blu Hotel & Spa  
Lough Atalia Road, Galway, Ireland  
Tel: +353 91 538 300, Fax: +353 91 538 380  
[sales.galway@radissonblu.com](mailto:sales.galway@radissonblu.com)  
[radissonhotelgalway.com](http://radissonhotelgalway.com)

ENGLISH 04/10

**Radisson** BLU  
HOTEL & SPA, GALWAY

## WELCOME

The Radisson Blu Hotel & Spa, Galway is ideally located on the edge of Lough Atalia and overlooking Galway Bay. The hotel is only a few minutes walk to Galway city centre and the main rail and bus station. It is just 15 minutes from Galway

Airport, 2 hours from Dublin and 90 mins from Ireland West International Airport Knock and Shannon Airport. Galway, Ireland's third largest city, is an experience to be savoured and remembered. The historic 'City of the Tribes' dances to its own

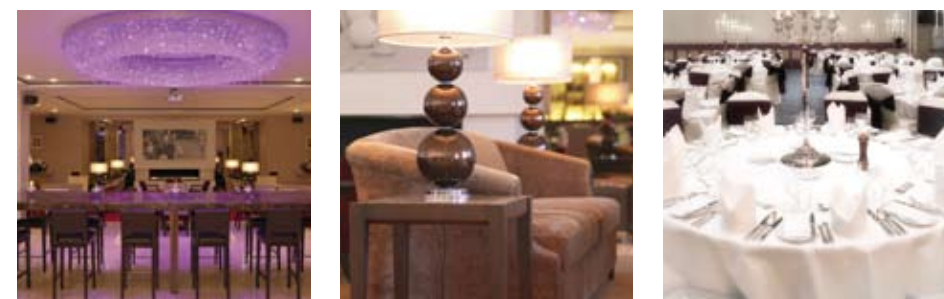
unique beat... music, festivals, horse racing, pubs, restaurants, shops, theatres and the Galway people all combine to create an atmospheric medieval city of culture.

## MEETINGS & EVENTS

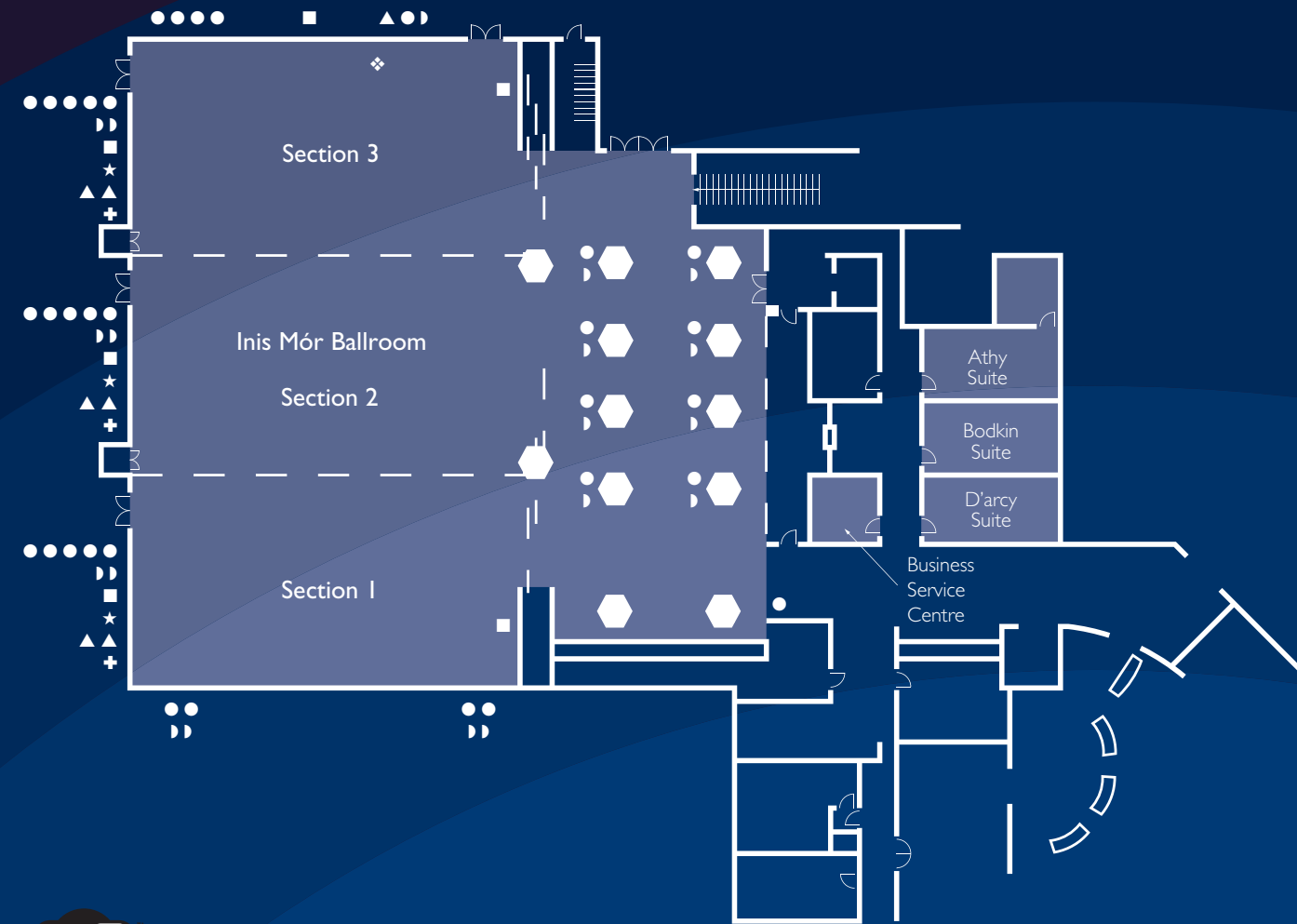
As the premier conference venue in the West of Ireland we offer experience and expertise to ensure your conference is a success. Our range of meeting, exhibition and syndicate rooms allow us to cater for conferences from 10 - 750 delegates. The **Inis Mór Ballroom** has 800m<sup>2</sup> of space with a ceiling height of 5.8m and offers excellent flexibility. It can be enjoyed in its entirety for large events or the sound proofed partitions allow for three separate event areas and a large reception space. Up to 1000 guests

can be accommodated within the main ballroom for a reception and up to 650 guests can be seated for a gala dinner. The pre-conference area is the perfect venue for exhibitions or as an extension to the main conference facility. There are also 6 modern boardrooms and a business centre adjacent to the conference area. All meeting rooms are air-conditioned and free high speed WiFi is available. **The Burren Panoramic Suite** is located on the 4th floor, with stunning views of Lough

Atalia & Galway Bay, ideal for private dinners or boardroom meetings. The **Live Lounge** is a purpose-built, technically designed venue over two floors with a dedicated VIP area. The 500m<sup>2</sup> venue space is ideal for concerts, exhibitions, meetings & events catering for up to 900 guests. The Live Lounge can also be exclusively booked for private or company parties, with 3 great bars and varied buffet menus available.



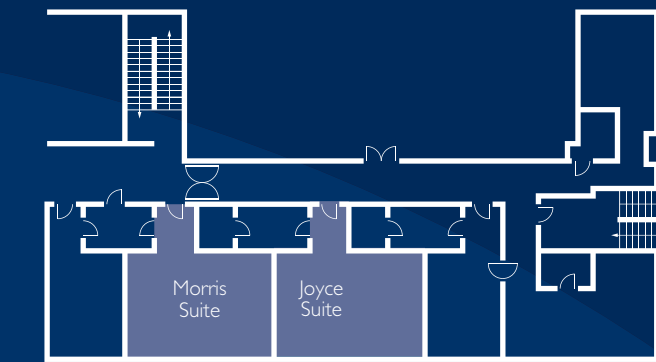
## Ground Floor



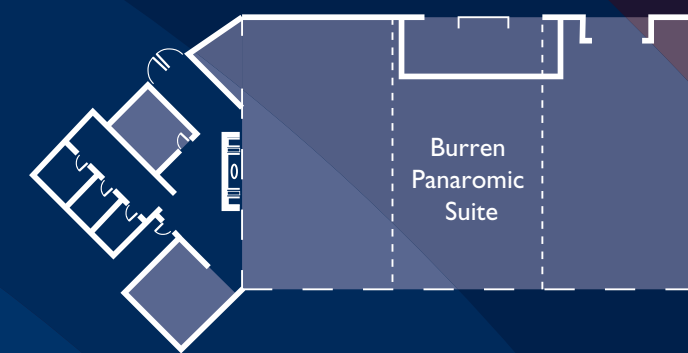
### KEY

- DOUBLE 13 AMP SOCKET
- + 3 PHASE POWER SUPPLY (32 3-AMP)
- ▶ TELEPHONE / INTERNET POINT
- ★ TV SOCKET
- ▲ MICROPHONE SOCKET
- ❖ 3 PHASE POWER SUPPLY (63 3-AMP)
- SCREEN

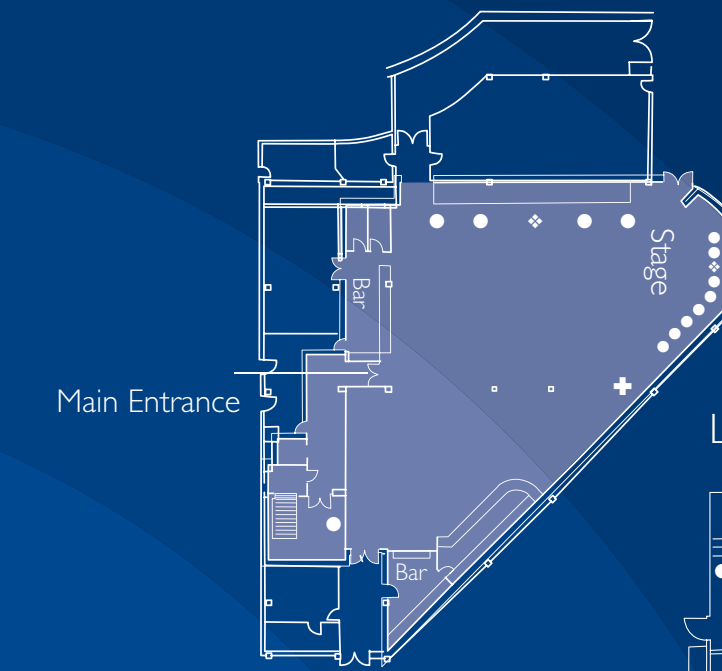
## First Floor



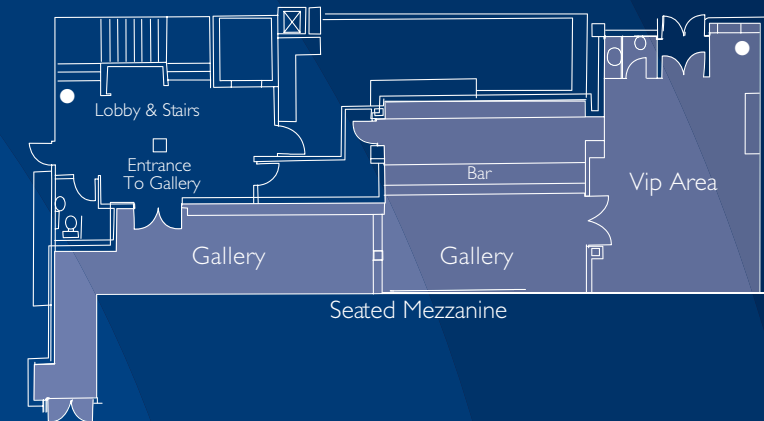
## Fourth Floor



## Live Lounge Main Venue



## Live Lounge Gallery Venue



**WiFi** AVAILABLE THROUGHOUT

MEETING ROOMS CAPACITY CHART																
		Board room	Banquet style	Class room	U-Shape style	Theatre Square	Reception style	Ceiling height	Length & width	Area sq. m	Door height	Door width	Power points	Lighting	T.V. sockets	Phone points
Ground floor	Inis Mór Ballroom 1+2+3	-	450	450	-	750	990	5.80	32.3 x 19.8	630	2,4	1,9	✓	✓	✓	✓
	Inis Mór Ballroom 1	-	150	100	65	220	240	5.80	10,8 x 19,5	210	2,4	1,9	✓	✓	✓	✓
	Inis Mór Ballroom 2	-	150	100	65	220	240	5.80	10,8 x 19,5	210	2,4	1,9	✓	✓	✓	✓
	Inis Mór Ballroom 3	-	150	100	65	220	240	5.80	10,8 x 19,5	210	2,4	1,9	✓	✓	✓	✓
	Pre-conference area	-	-	-	-	280	4,40	27 x 13	250	2,4	1,9	✓	✓	✓	✓	✓
	Inis Mór + Pre-conference	-	650	650	-	990	990	-	-	250	2,4	1,9	✓	✓	✓	✓
	Live Lounge	-	220	200	50	450	900	5,2	20 x 25	445	-	-	✓	✓	-	✓
	Athy Suite	10	-	-	-	-	-	3,00	6,4 x 3,6	23	2,4	0,9	✓	✓	✓	✓
	Bodkin Suite	10	-	-	-	-	-	3,00	6,4 x 3,6	23	2,4	0,9	✓	✓	✓	✓
	D'arcy Suite	10	-	-	-	-	-	3,00	6,4 x 3,6	23	2,4	0,9	✓	✓	✓	✓
First Floor	Morris Suite	15	-	15	14	30	40	2,50	7,2 x 4,8	34	2	0,8	✓	✓	✓	✓
	Joyce Suite	15	-	15	14	30	40	2,50	7,2 x 4,8	34	2	0,8	✓	✓	✓	✓
Fourth Floor	Burren Panoramic Suite	20	30	-	24	-	80	2,35	14 x 8	112	2,12	1,26	✓	✓	✓	✓

goldpointsplus™

Earn Gold Points® for organising events at the Radisson Blu Hotel & Spa, Galway. Just register your meeting under your name and goldpoints plus membership card and reap the benefits.

For more information please see [goldpointsplus.com/planners](http://goldpointsplus.com/planners)